

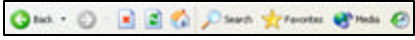



Getting Started with Internet Explorer

The Internet

- A global network of networks
- Some popular uses of:
 - e-mail
 - information access
 - e-commerce
 - online gaming
 - software distribution/ file transfer (nib)
- World Wide Web (WWW)
 - web page
 - web server
 - web browser program
 - URL
 - eg: <http://www.sc.maricopa.edu/trollen/index.htm>

2

Exploring the Browser Window

- Toolbar

- Address bar
Address  <http://www.loc.gov/>
 - Uniform Resource Locator (URL)
- Links bar

 - can be relocated for better exposure
- Status bar

 - information about connection, progress meter, hyperlink address

3

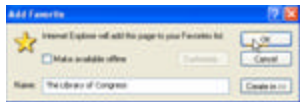
Viewing and Navigating Web Pages


- 7 common ways to navigate to a web page
 -
 -
 -
 -
 -
 -
 -
- How set a different home page?

4

Saving a Favorite Web Page

- Can save a URL for future reference (bookmark)
- Favorites | Add to Favorites...



- Favorites button 
 - displays the Favorites Pane

5

Copying Information from a Web Page

- Permitted Usage
 - It is your responsibility to be aware of and comply with the source site's permissions/restrictions policy
 - Be sure to cite the source
- Mechanics
 - How use text from a web page in a new document?
 - How save a graphic?

6

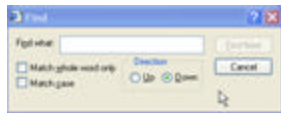
Searching for Web Pages

- Search Engine
 - a web site that maintains an index of keywords and web page addresses
 - you specify a keyword/phrase and the search engine displays hyperlinks to relevant pages ("hits")
- Recommended search engines
 - www.google.com
 - www.hotbot.com
 - www.northernlight.com
- Search Button
 - displays the Search Pane and uses MSN Search
- In-class practice
 - use a search engine to find information about the Arizona Lottery
 - how many "hits"
 - what happens when you hold [Shift] while clicking a hyperlink?

7

Searching a Web Page

- Once you've navigated to a web page, you can perform a keyword search of its contents
- 2 ways to initiate:
 - Edit | Find (on this page) ...
 - [Ctrl] + [F]



8
